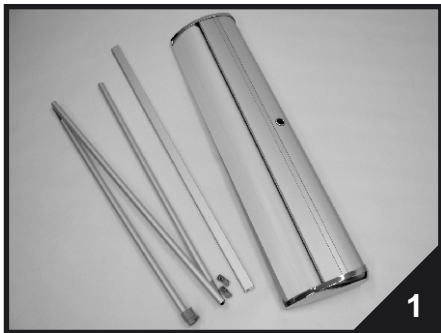
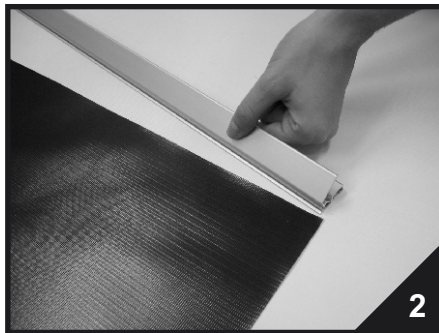


# NÁVOD / INSTRUCTION

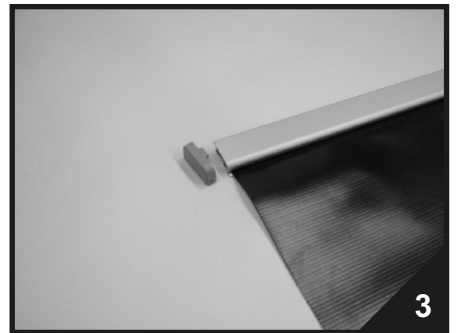
## Roll Up Luxury



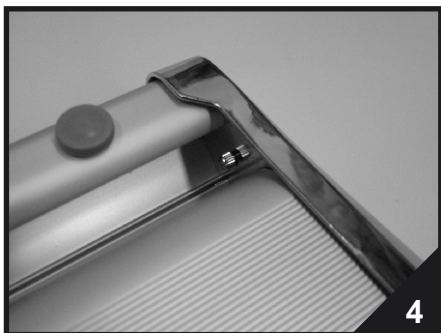
1. Package content.



2. Insert upper part of theme into the clipframe.



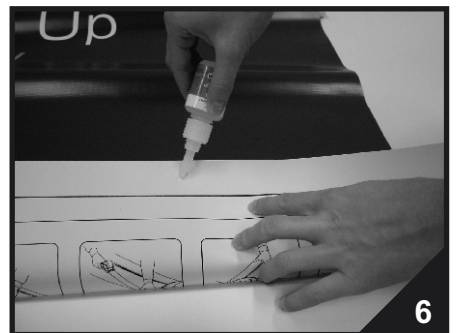
3. Attach head plates.



4. On the right side of the base unit release securing screw and remove head plate.



5. Remove covering tape from the base unit.



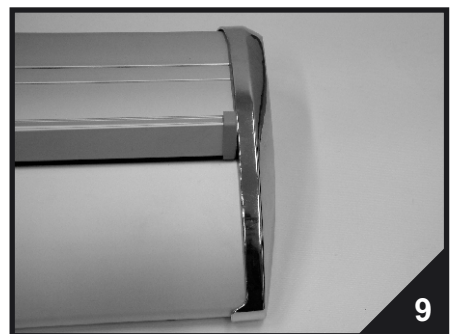
6. We recommend to put on super glue along the whole width of the tape – that will prevent unwanted pull-up of the theme from the base unit.



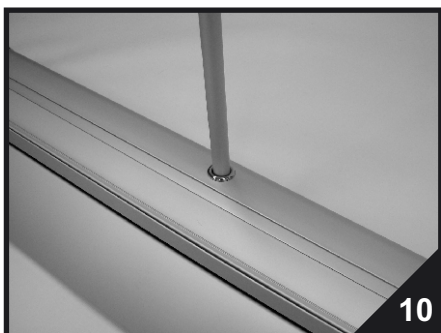
7. Affix the theme.



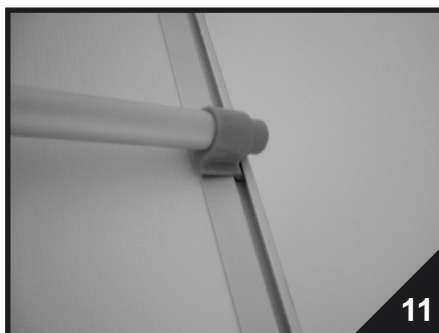
8. Hold the theme and carefully pull out the securing buckle from the side. Theme will roll into the base unit.



9. Place back the head plate and screw in the screw in the bottom part.



10. Insert supporting pole into the back part.



11. Pull out the theme from the base unit and support it in the back with the pole.

If you don't follow instructions in this manual, we will not acknowledge any potential complaints.